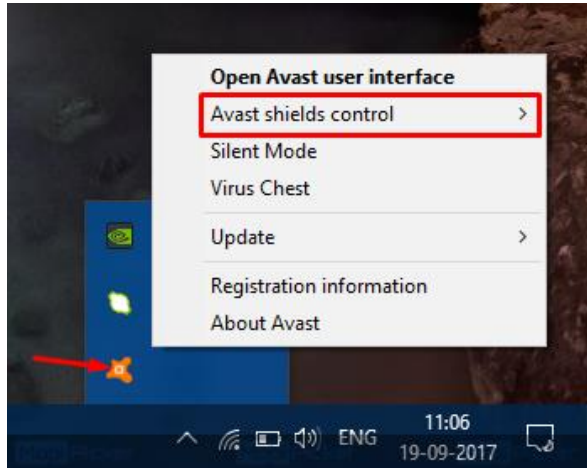


## How to Disable Avast on Windows

Follow the below methods to disable complete Avast antivirus security or individual antivirus shields in Windows 10, Windows 8, or Windows 7 PC.

### 1. Disable Complete Avast Security on Windows

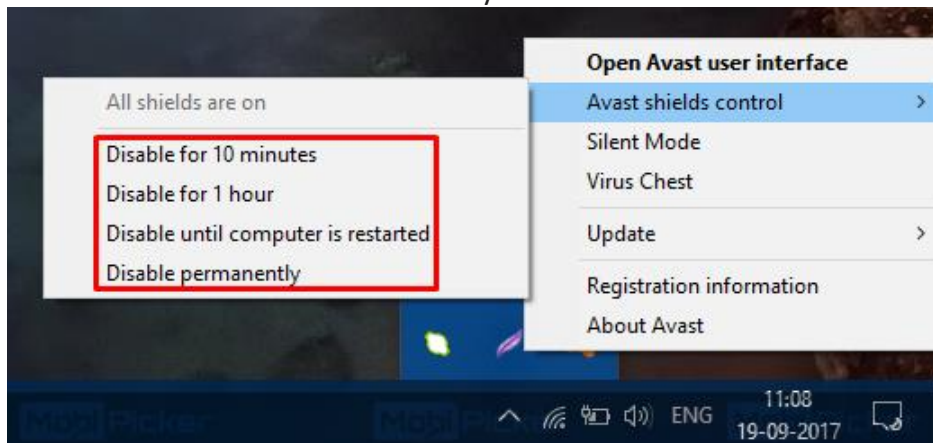
**Step 1.** Go to your Windows taskbar and right click on Avast's icon. Select *Avast! Shields control*.



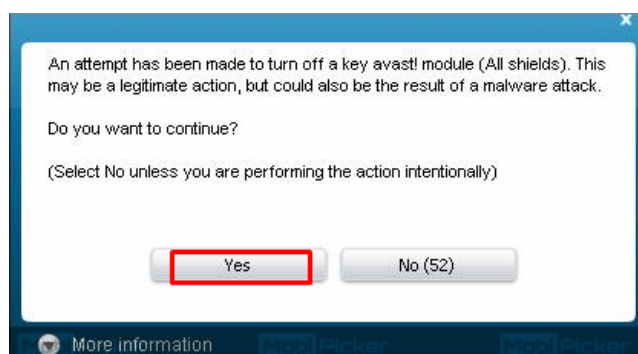
**Step 2.** You will see four options with different time durations. They will be:

- *Disable for 10 minutes*
- *Disable for 1 hour*
- *Disable until computer is restarted*
- *Disable permanently*

Select the time duration which suits your need.



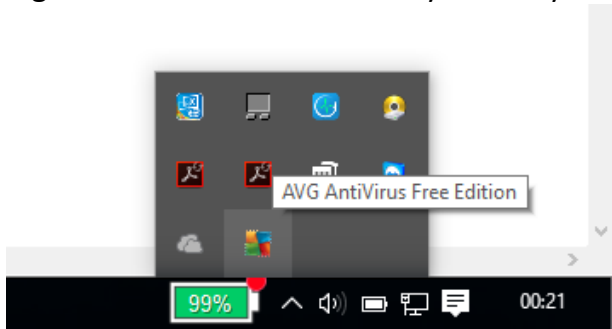
**Step 3.** When you click on your chosen time duration, the Avast antivirus will ask you for confirmation. Select *Yes*. It will disable your Avast antivirus temporarily for the selected duration.



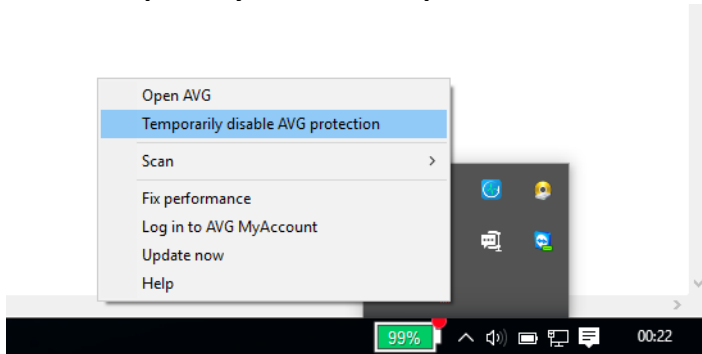
## How to disable or turn off AVG antivirus.

1. For AVG antivirus software:

1. **Right-click** the **AVG icon** in the system tray next to the clock.



2. Click **"Temporarily disable AVG protection"**.

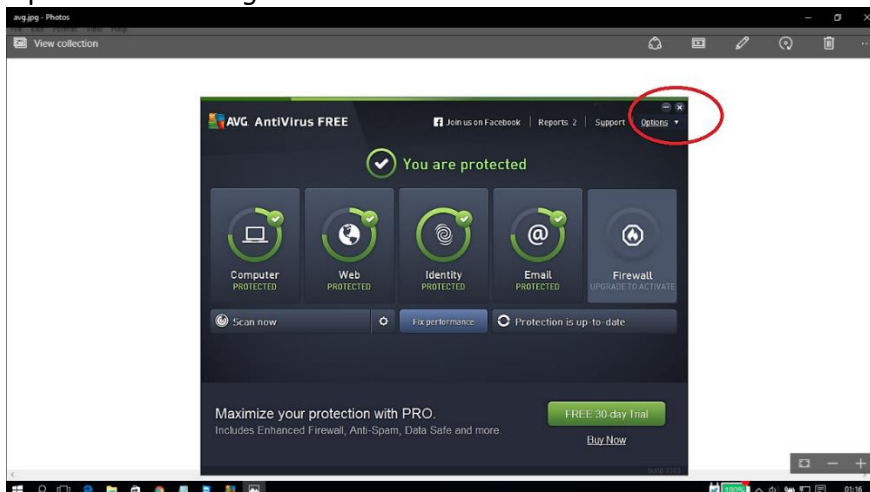


3. Choose how long you want the protection to be disabled and whether to disable the firewall as well, and then click **"OK"**.

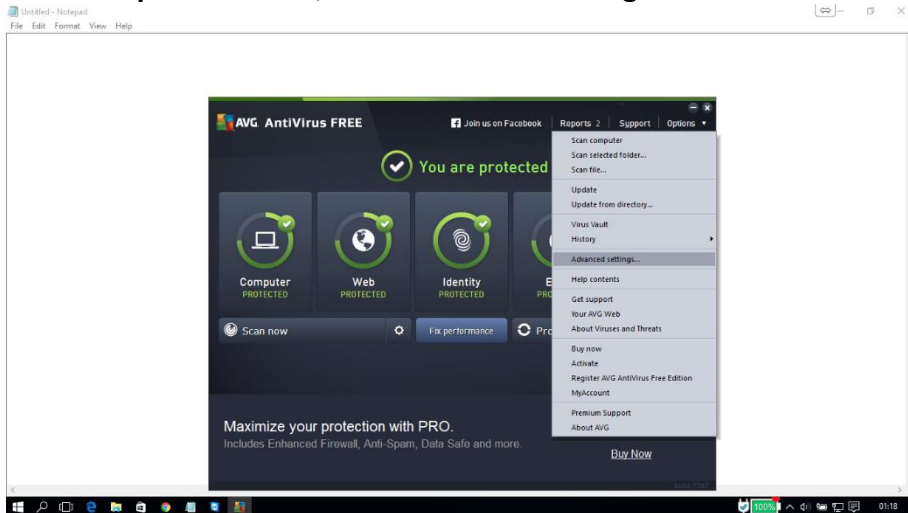


2. You can also disable AVG from the **"Advanced settings"**:

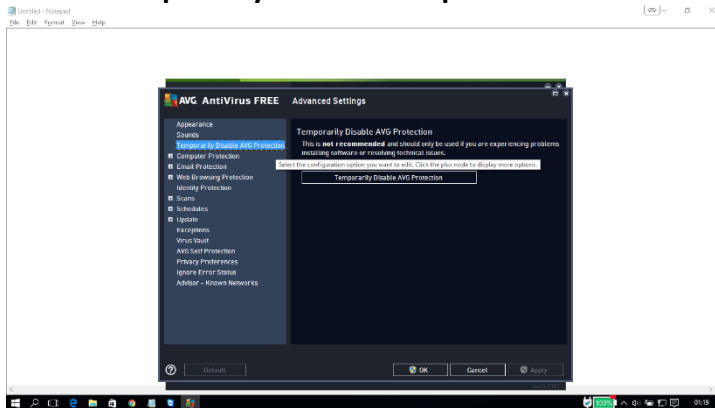
1. Open the **AVG Program**.



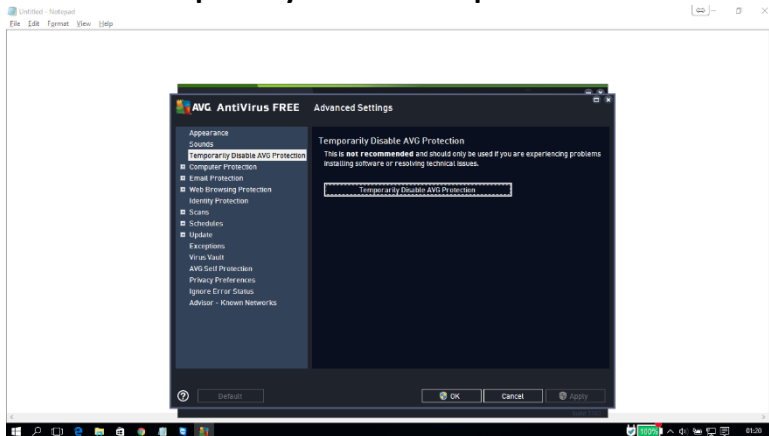
2. On the "Options" menu, click "Advanced settings".



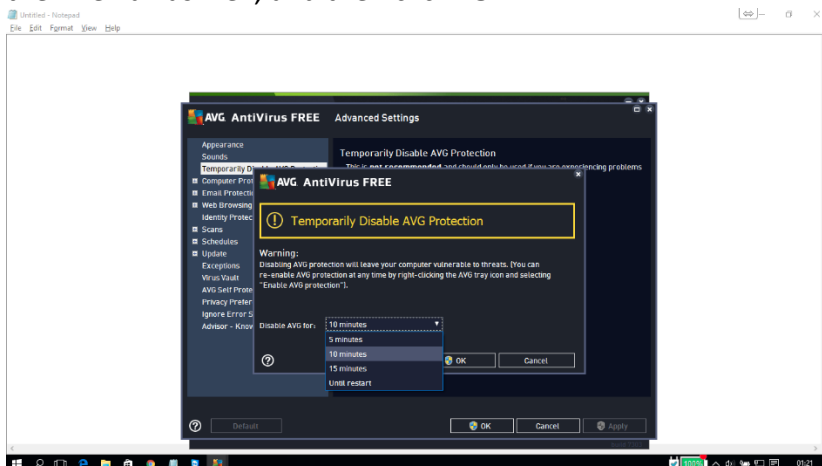
3. Select "Temporarily disable AVG protection" in the menu on the left side.



4. Click the "Temporarily disable AVG protection" button.

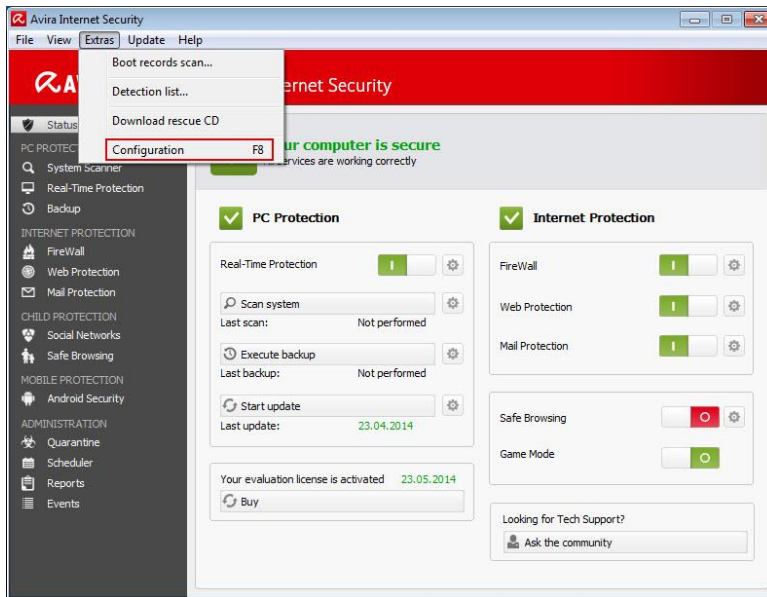


5. Choose how long you want the protection to be disabled and whether to disable the Firewall as well, and then click "OK".

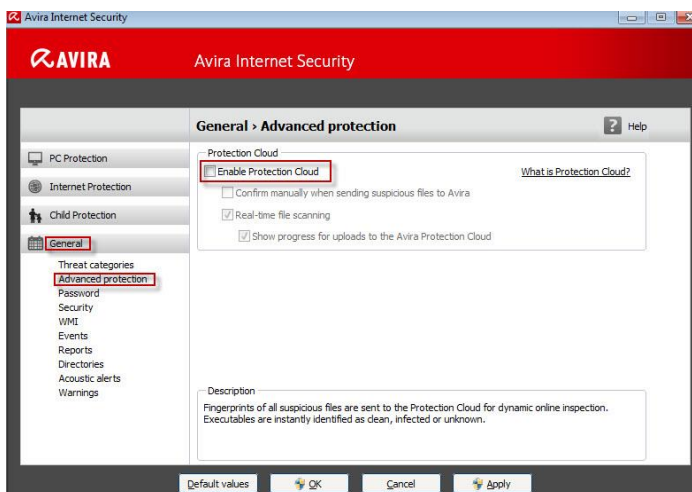


## HOW TO DEACTIVATE / ACTIVATE AVIRA PROTECTION

1. Open the Avira Control Center
2. Click on **Extras** → **Configuration**



3. Click on **General** → **Advanced Protection** and deactivate **Enable Protection Cloud**

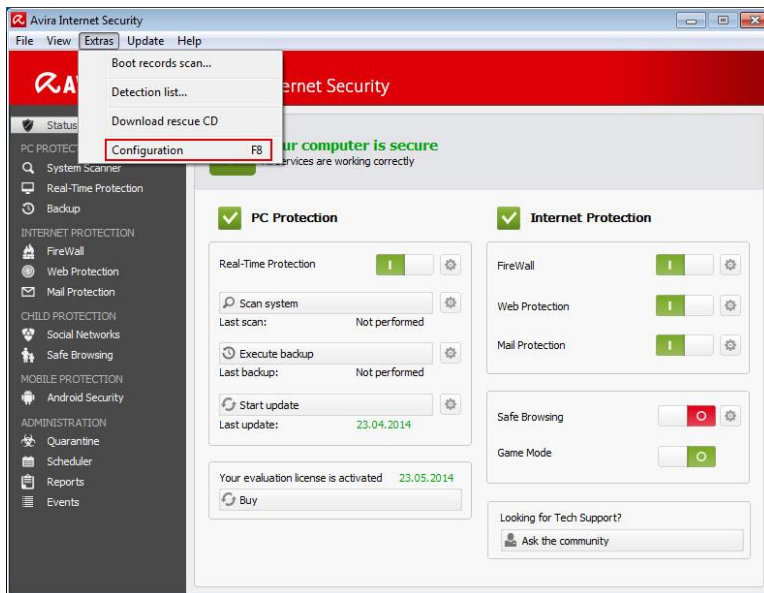


4. Close the window using the button OK
5. Restart your computer

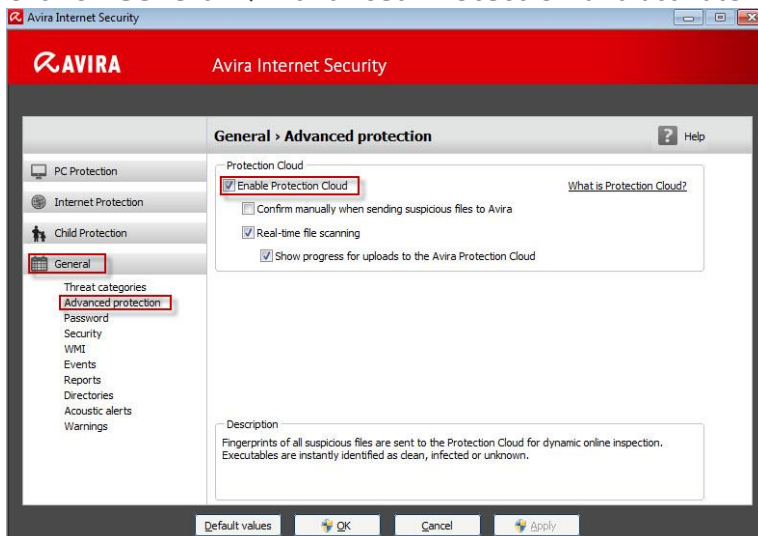
## ACTIVATE AVIRA PROTECTION CLOUD

If you like to use Avira Protection Cloud again, please follow the steps below to enable the feature again:

1. Open the Avira Control Center
2. Click on **Extras** → **Configuration**

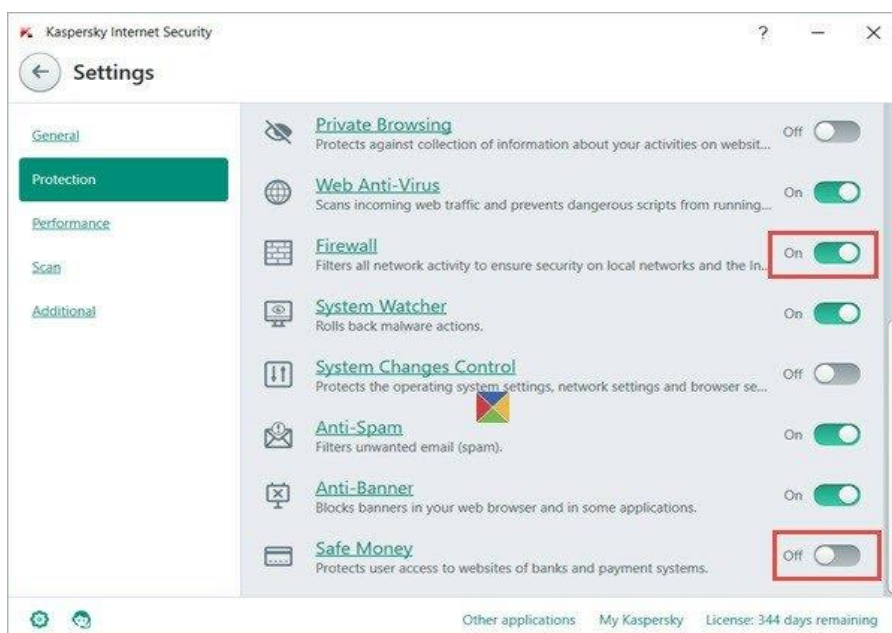


3. Click on **General** → **Advanced Protection** and activate **Enable Protection Cloud**



4. Close the window using the button **OK**

## TURN OFF KASPERSKY FIREWALL



### **FOR McAfee ANTIVIRUS:**

1. Double-click the McAfee icon in the System Tray. This is located in the lower-right corner of the desktop. The icon looks like an "M" in a red shield.
2. Click "Real-Time Scanning". This button is located at the top of the window, underneath the green banner. By default, it will say "On".
3. Disable Real-Time Scanning. When you click the button, you will be given the option to disable the real-time scanning.
4. Set how long you want it disabled.

### **FOR PANDA ANTIVIRUS**

1. Click "Antivirus" in the main window of the program.
2. On the left-hand side of the window, make sure the "Known viruses" option is selected.
3. If you want to enable the protection against known threats, set the control to the "ON" position. ...
4. Click "OK".

### **FOR AVAST ANTIVIRUS**

1. Click the small triangle on your Windows task-bar to open the notification area.
2. Click "Avast shields control".
3. After selecting the option, you will be prompted to confirm the operation.

### **FOR NORTON ANTIVIRUS**

1. Click the small triangle on your Windows task-bar to open the notification area. Right-click the Norton Antivirus icon for a list of options related to the security suite.
2. Click "Disable Smart Firewall" to temporarily shut down the firewall.

### **FOR KASPERSKY ANTIVIRUS**

1. Open **Kaspersky Anti-Virus 2015**.
2. At the bottom of the main application window, click "**Settings**".
3. If the application is password-protected, in the "**Settings**" window enter the password and select the "**Save password for current session**" check box. Click "**Continue**".
4. In the "**Settings**" window, go to the "**General**" section and turn off the button (move the button to the left side) in "**Protection**" section in the right frame.

### **FOR WEBROOT ANTIVIRUS**

1. Locate the SecureAnywhere icon in your system tray.
2. Right-click the system tray icon and select "Shut down Protection".
3. A prompt confirming whether you want to shut down appears. Click "Yes".
4. Depending on your settings, you may have to complete a CAPTCHA for confirmation as well.